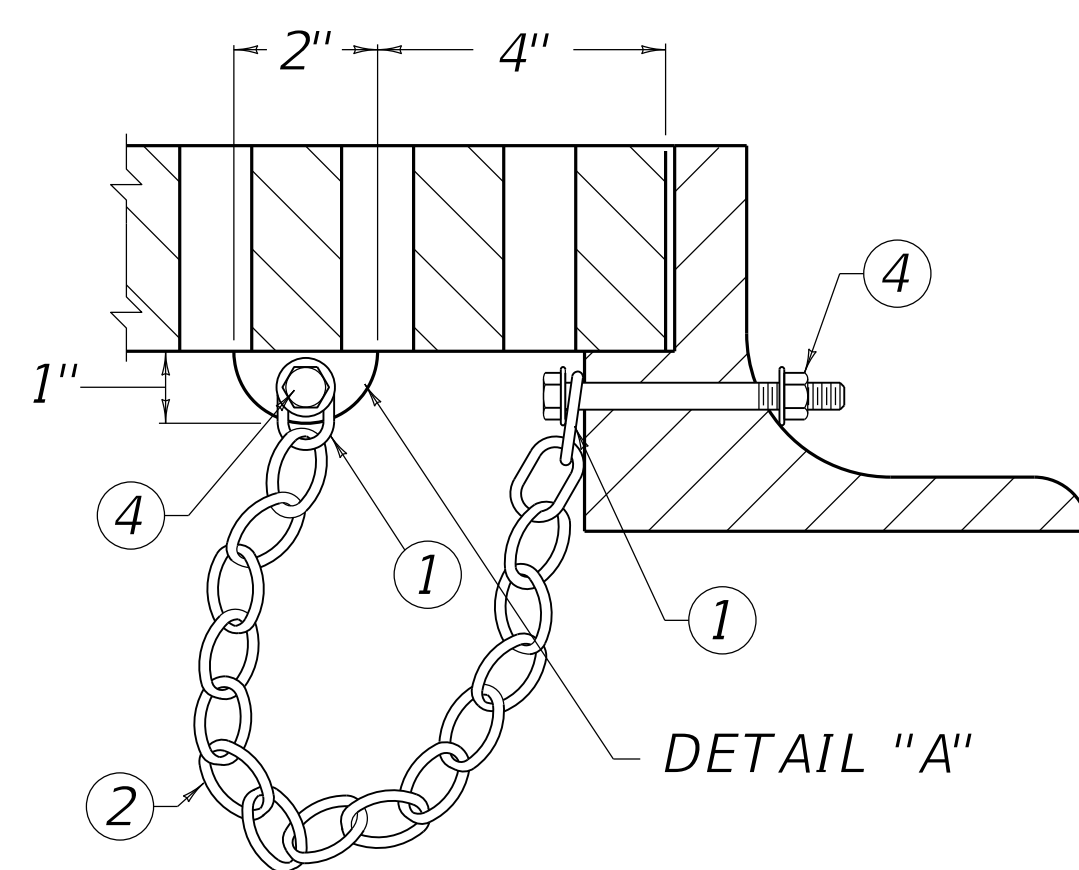
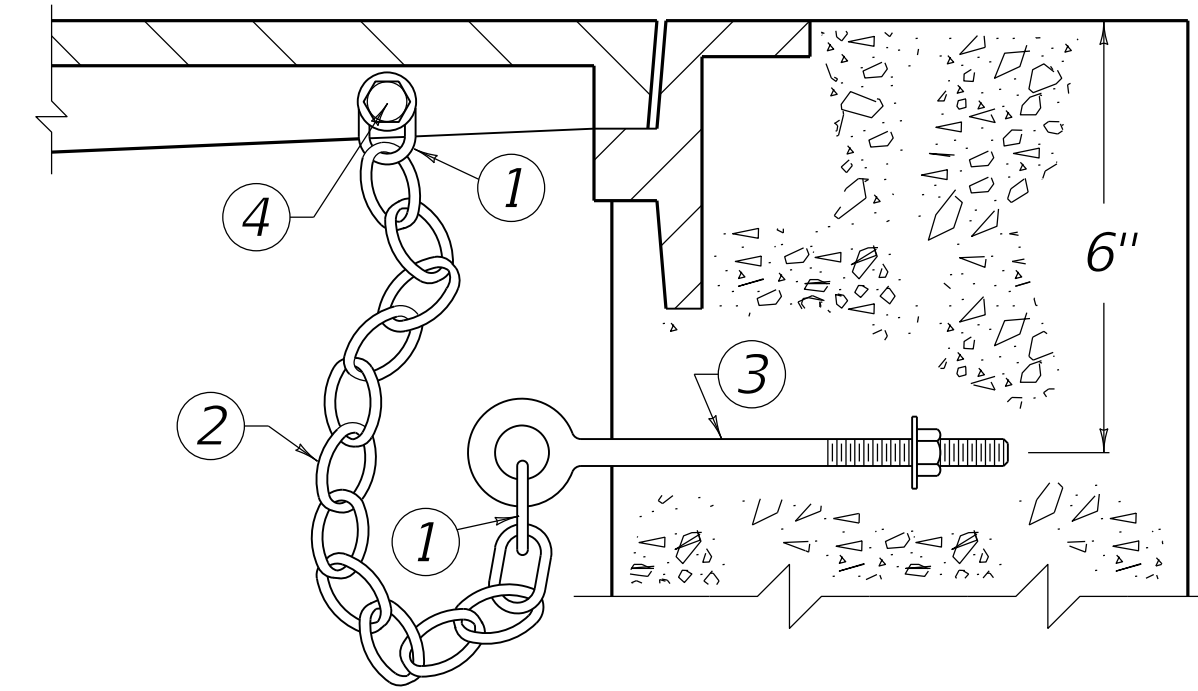


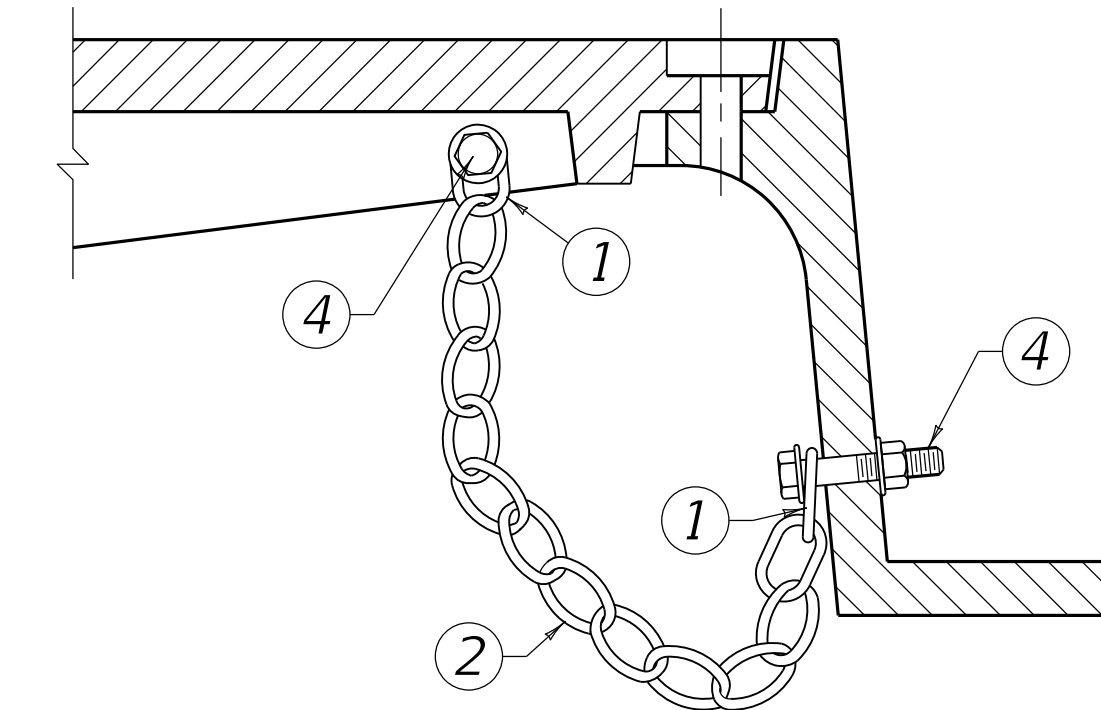
GRATE CONNECTED TO WALL



GRATE CONNECTED TO FRAME



LID CONNECTED TO WALL

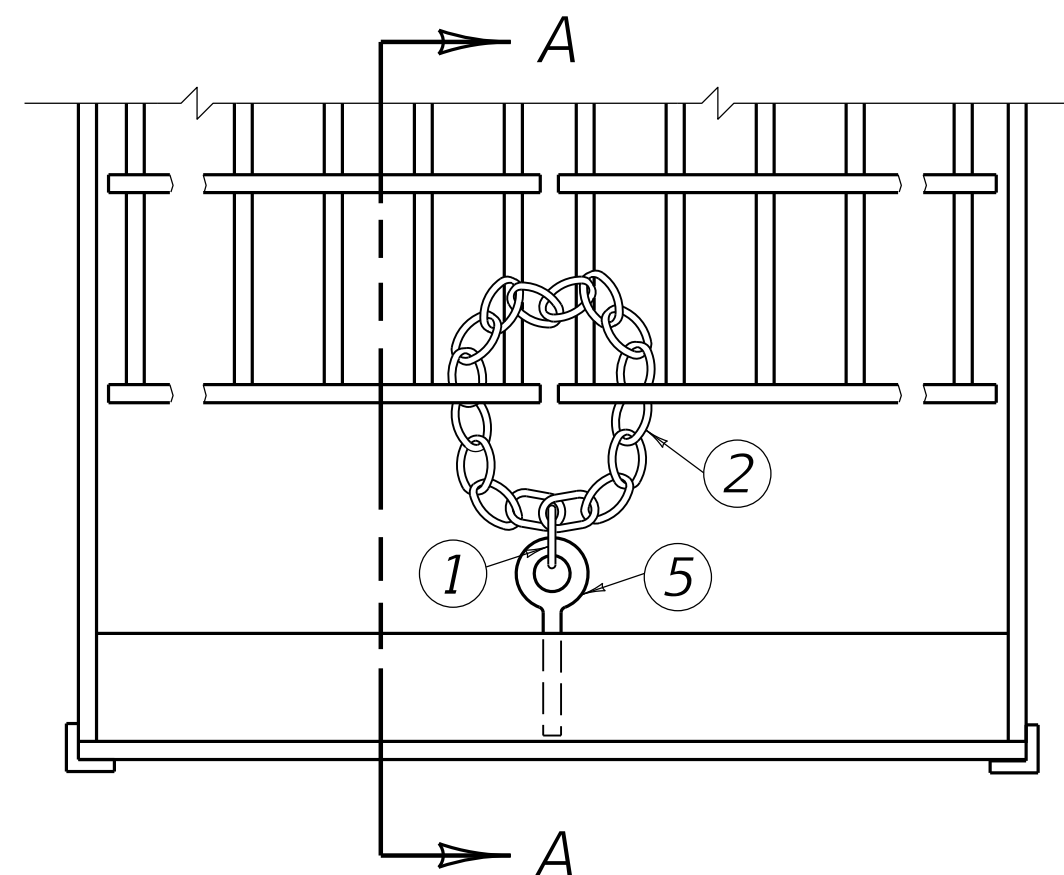


LID CONNECTED TO FRAME

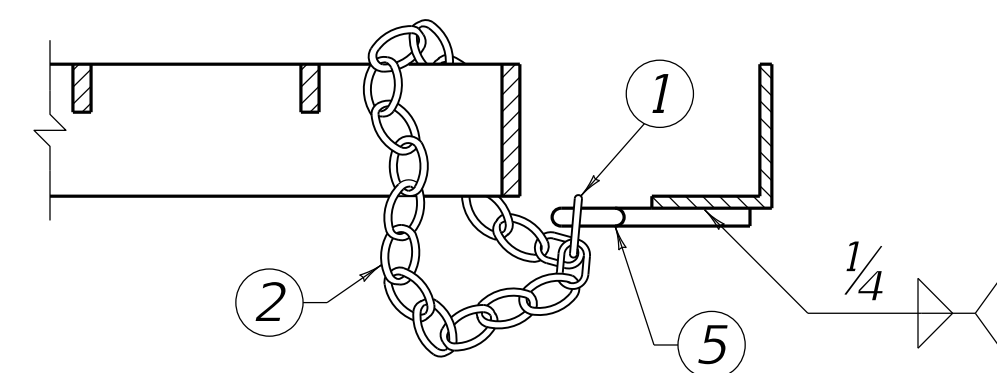
TYPICAL ILLUSTRATIONS FOR CASTINGS

~ NOTES ~

- 1 CHAIN SHACKLE, OR COLD SHUT OF AN APPROVED TYPE.
- 2 $\frac{3}{16}$ " PROOF COIL CHAIN OF SUFFICIENT LENGTH TO ALLOW REMOVAL AND DISPLACEMENT OF GRATE OR LID.
- 3 $\frac{3}{8}$ " x 6" EYE BOLT, NUT, AND WASHER.
- 4 $\frac{3}{8}$ " HEX HEAD CAP SCREW (GRADE 2), NUT AND WASHERS. LENGTH DETERMINED BY THICKNESS OF FRAME OR GRATE. $\frac{7}{16}$ " DIA. HOLE FOR CAP SCREW. BATTER THREADS ON CAP SCREW TO PREVENT REMOVAL OF NUT.
- 5 $\frac{3}{8}$ " EYE BOLT (LENGTH DETERMINED BY THE FRAME DIMENSION).
6. ALL EYE BOLTS SHALL HAVE A CONTINUOUS OR SOLID EYE.
7. ALL HARDWARE SHALL BE GALVANIZED AND OF COMMERCIAL QUALITY AND SHALL BE APPROVED BY THE ENGINEER.
8. THE COST OF THE COMPLETE SECURITY DEVICE, INSTALLED, SHALL BE INCIDENTAL TO THE COST OF THE STRUCTURE.
9. THE DESIGNS SHOWN ARE ACCEPTABLE; HOWEVER ARE SUBJECT TO CHANGE IF APPROVED IN WRITING BY THE ENGINEER.

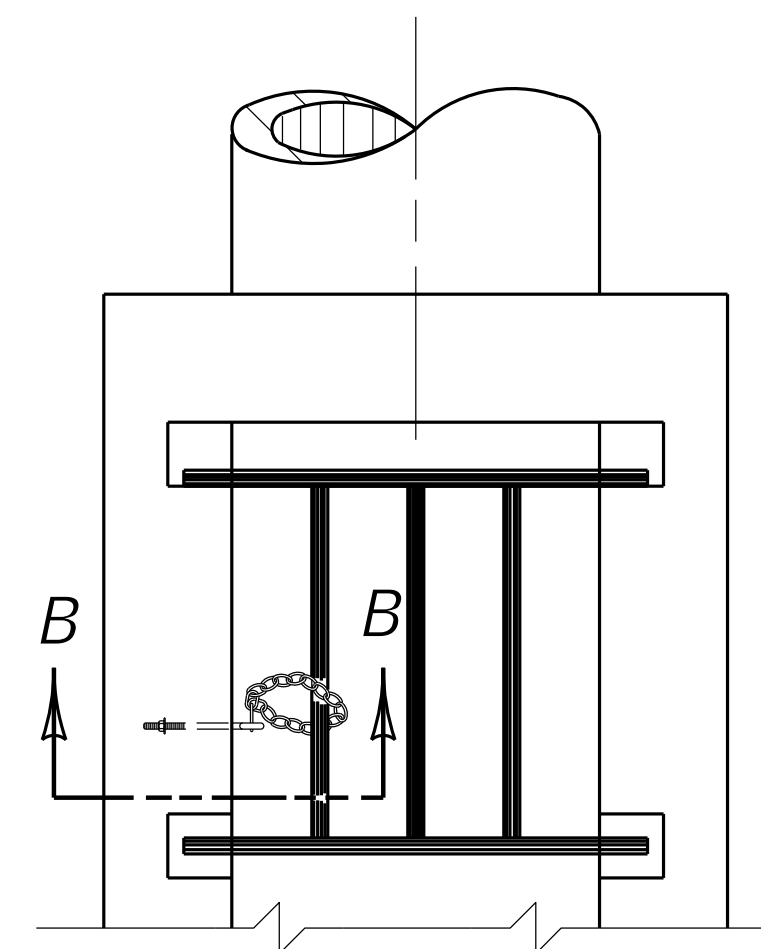


PLAN VIEW

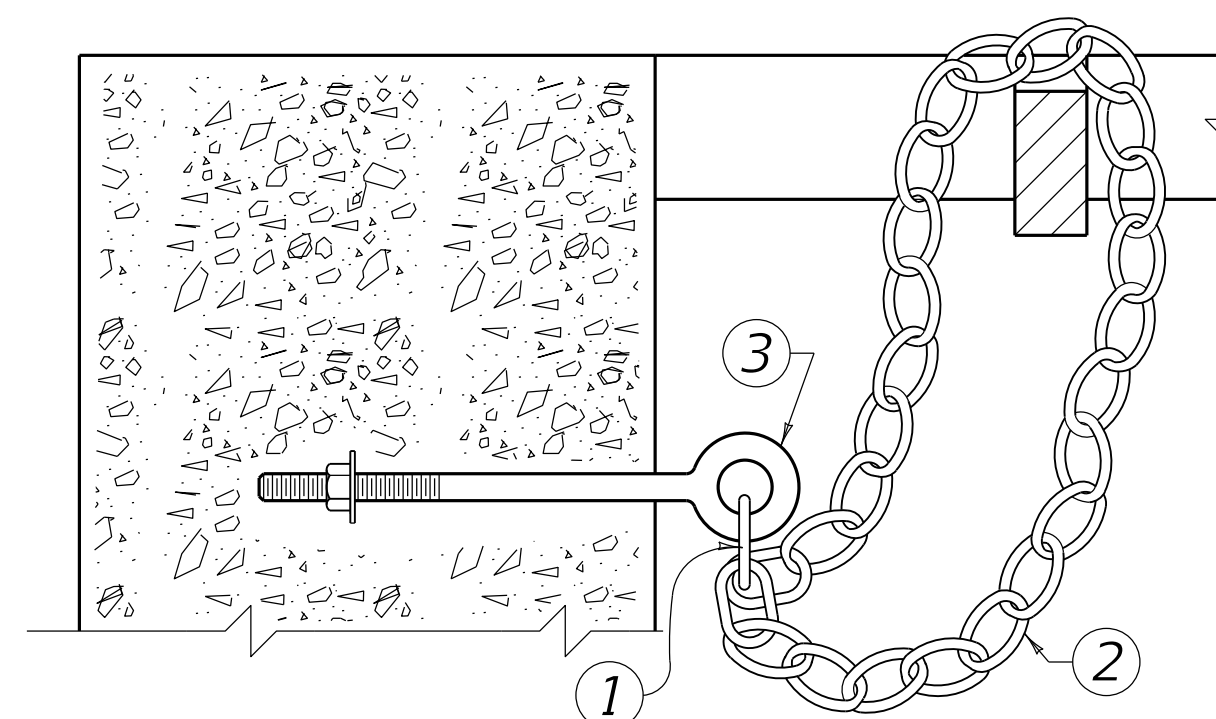


SECTION A-A

GRATE CONNECTED TO FRAME



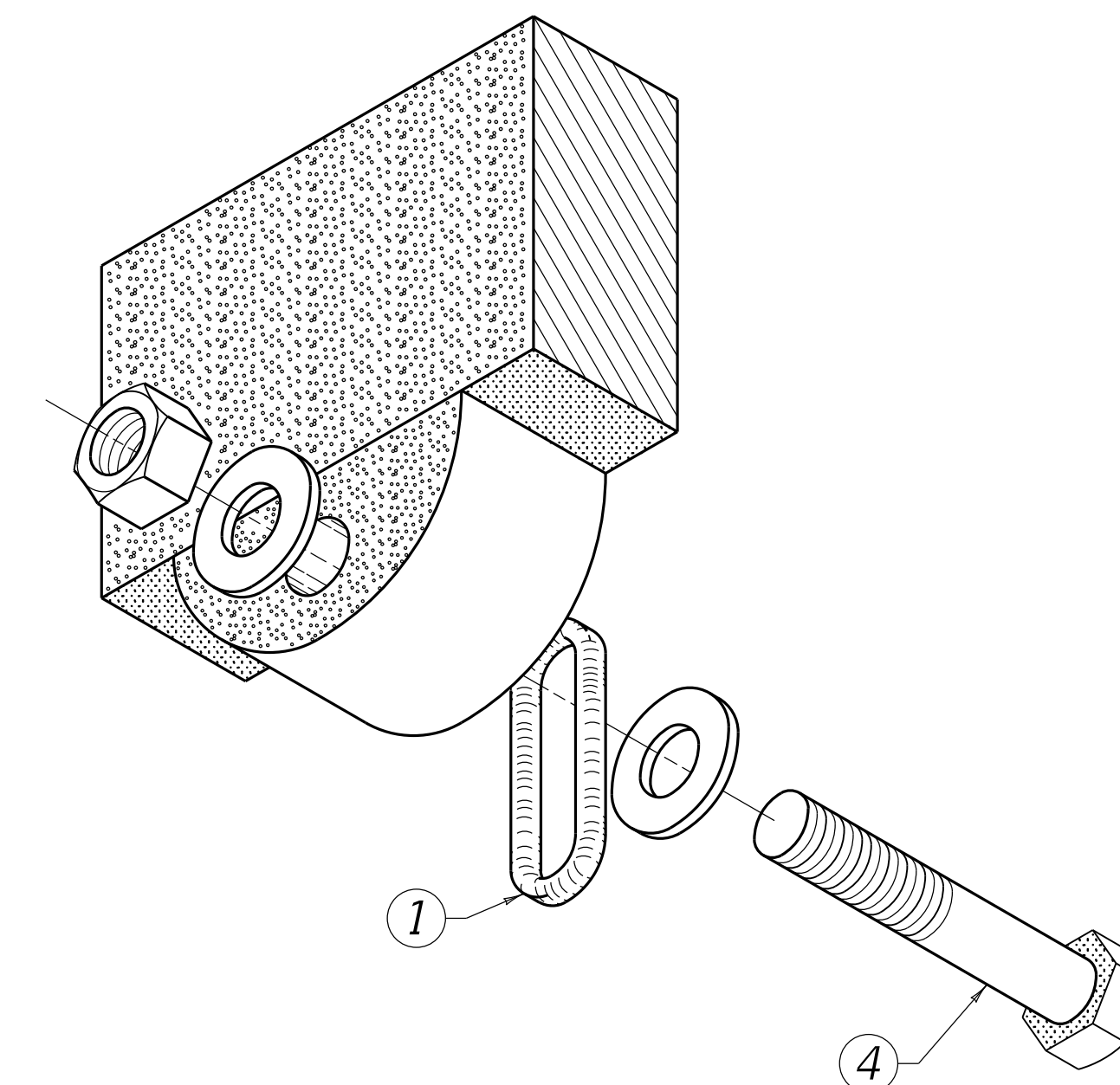
PLAN VIEW



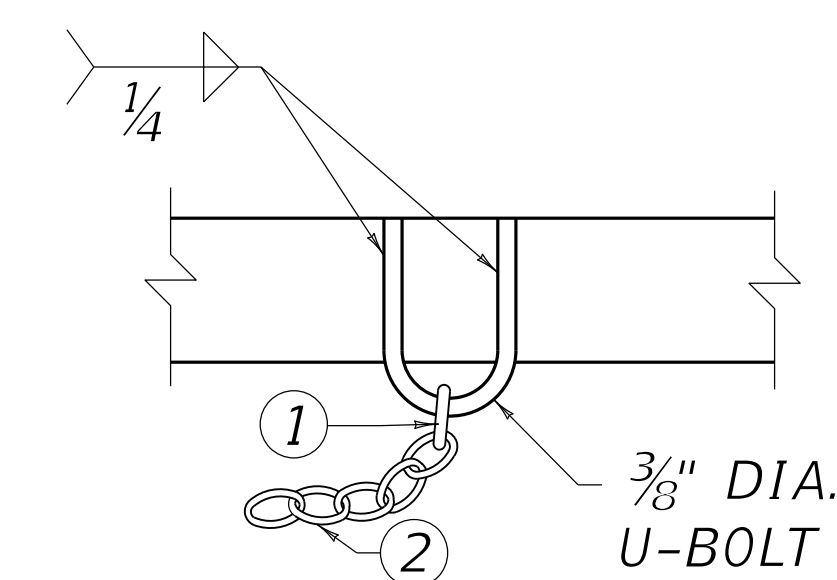
SECTION B-B

GRATE CONNECTED TO WALL

TYPICAL ILLUSTRATIONS FOR STRUCTURAL STEEL UNITS



DETAIL A
LUG ON CENTER CROSS MEMBER
AND BOLT ASSEMBLY
(AXONOMETRIC VIEW)



ALTERNATE FOR
STRUCTURAL STEEL
MEMBERS



COMMONWEALTH OF KENTUCKY
DEPARTMENT OF HIGHWAYS



MISCELLANEOUS

SECURITY DEVICES FOR FRAMES, GRATES AND LIDS

STANDARD DRAWING NUMBER

RDX-160-06

DRAINAGE

REVISION DATE: 12/01/2015
REVISION NUMBER: 0

12-01-2015
DATE

SUBMITTED
DIVISION DIRECTOR
APPROVED
STATE HIGHWAY ENGINEER

12-01-2015
DATE